

ECM-DS70P

SERVICE MANUAL

Ver 1.1 2001.03
With SUPPLEMENT-1
(9-923-256-81)

US Model
Canadian Model
AEP Model
E Model



SPECIFICATIONS

General

Type Electret condenser microphone
Dimensions 58 × 57 × 16 mm (w/h/d) incl.
projecting parts and controls
Mass Approx. 10 g

Performance

Frequency response 100 – 15,000 Hz (stereo)
Directivity Unidirectional
Sensitivity Open circuit output voltage^{*1}: -38.0
±3.5 dB
Difference between L and R channel
sensitivity: Less than 3 dB
Maximum sound pressure level^{*2}
More than 110 dB_{SPL}
Operating temperature range
0°C to 40°C (32°F to 104°F)

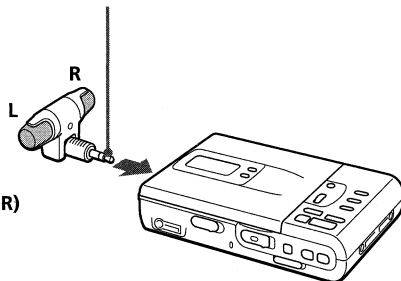
*1 0 dB = 1 V/Pa, 1,000 Hz (1 Pa = 10 μbar = 94 dB_{SPL})

*2 1 % wave distortion is present at 1,000 Hz.
(0 dB_{SPL} = 2 × 10⁻⁵ Pa)

Design and specifications are subject to change without notice.

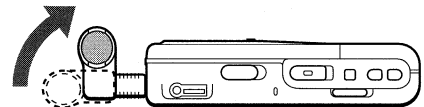
A

Output plug (gold plated stereo miniplug)



to MIC (PLUG IN POWER)

B



Using the Microphone

(See fig. **A**)

Connect the stereo miniplug of the microphone to a microphone jack (stereo minijack) of recording equipment compatible with the plug-in power supply system such as a MD recorder, etc.

Note

Be sure to use with recording equipment compatible with the plug-in power supply system. The power of the microphone is supplied from the connected recording equipment.

Adjusting the angle of the microphone (See fig. **B**)

When you use the microphone with the connected equipment put on a desk, etc., erect the microphone as illustrated to reduce the reflection from the surface of a desk, etc.

Notes

- Manually adjusting the recording level is recommended for better recording when you perform digital recording with an MD recorder, etc.
- This microphone is not used with recording equipment that is not compatible with plug-in power supply system.

ELECTRET CONDENSER STEREO MICROPHONE

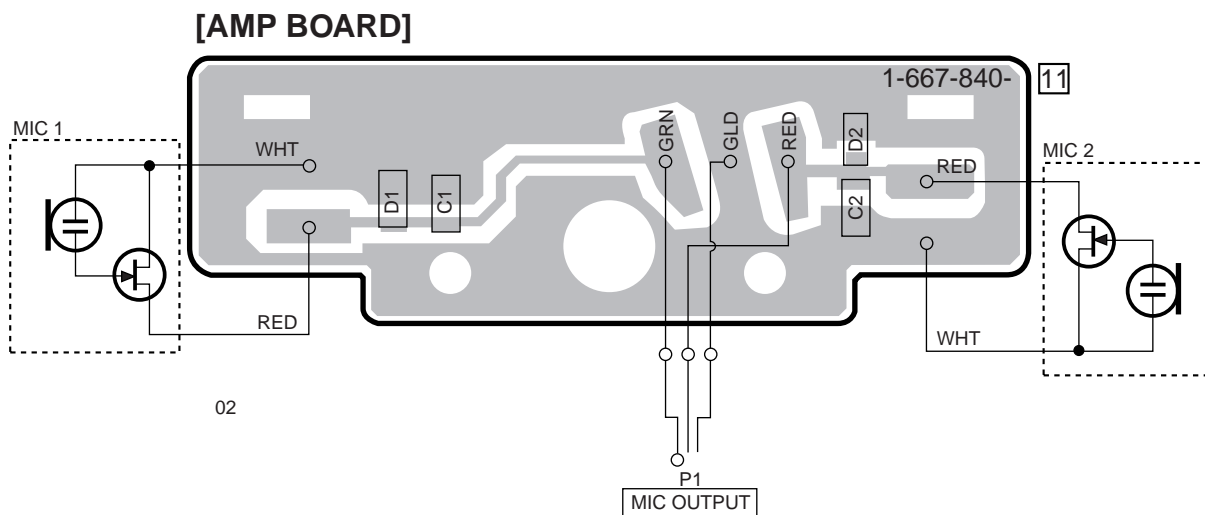
9-923-256-12
2001C0200-1
© 2001.3

Sony Corporation
Audio Entertainment Group
General Engineering Dept.

SONY®

SECTION 1 DIAGRAM

[PRINTED WIRING BOARD]

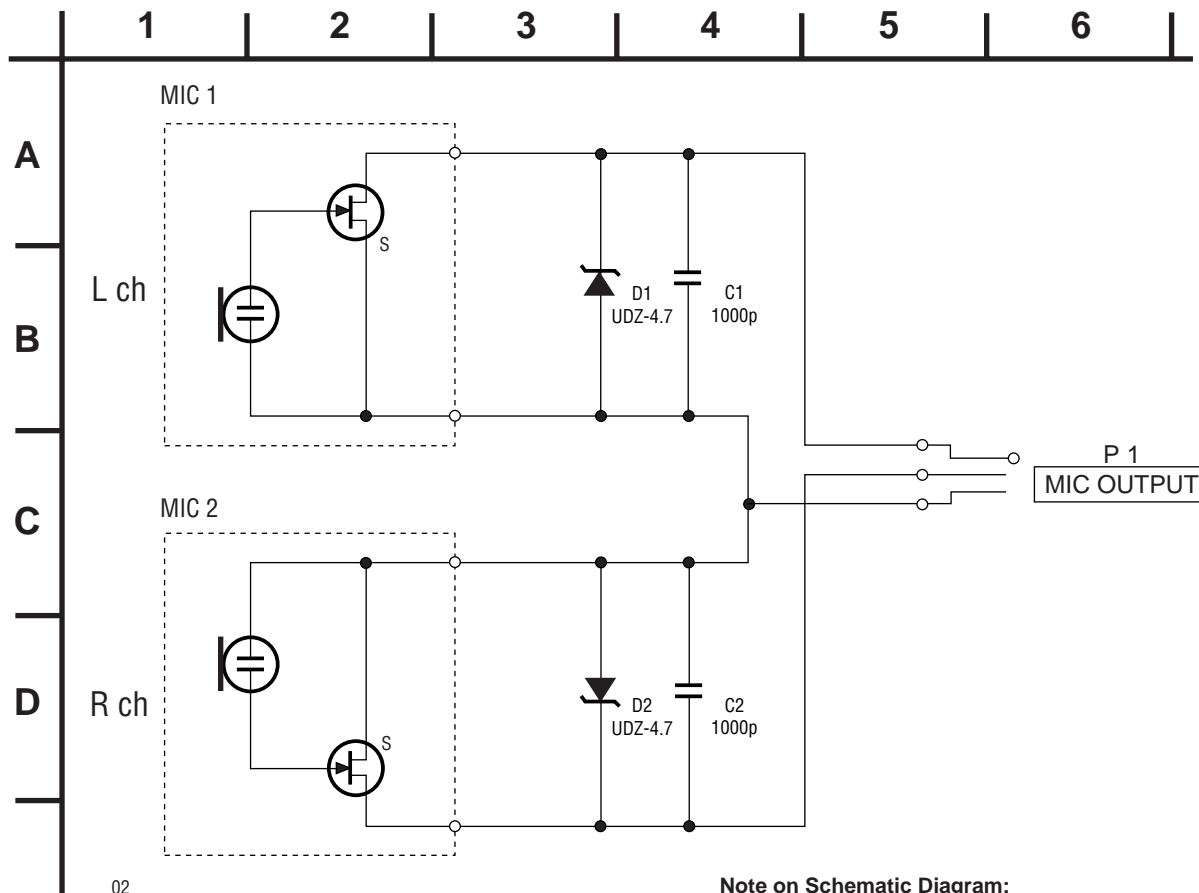


Note on Printed Wiring Boards:

Note:

- — : parts extracted from the component side.
- ▨ : Pattern on the side which is seen.

[SCHEMATIC DIAGRAM]



Note on Schematic Diagram:

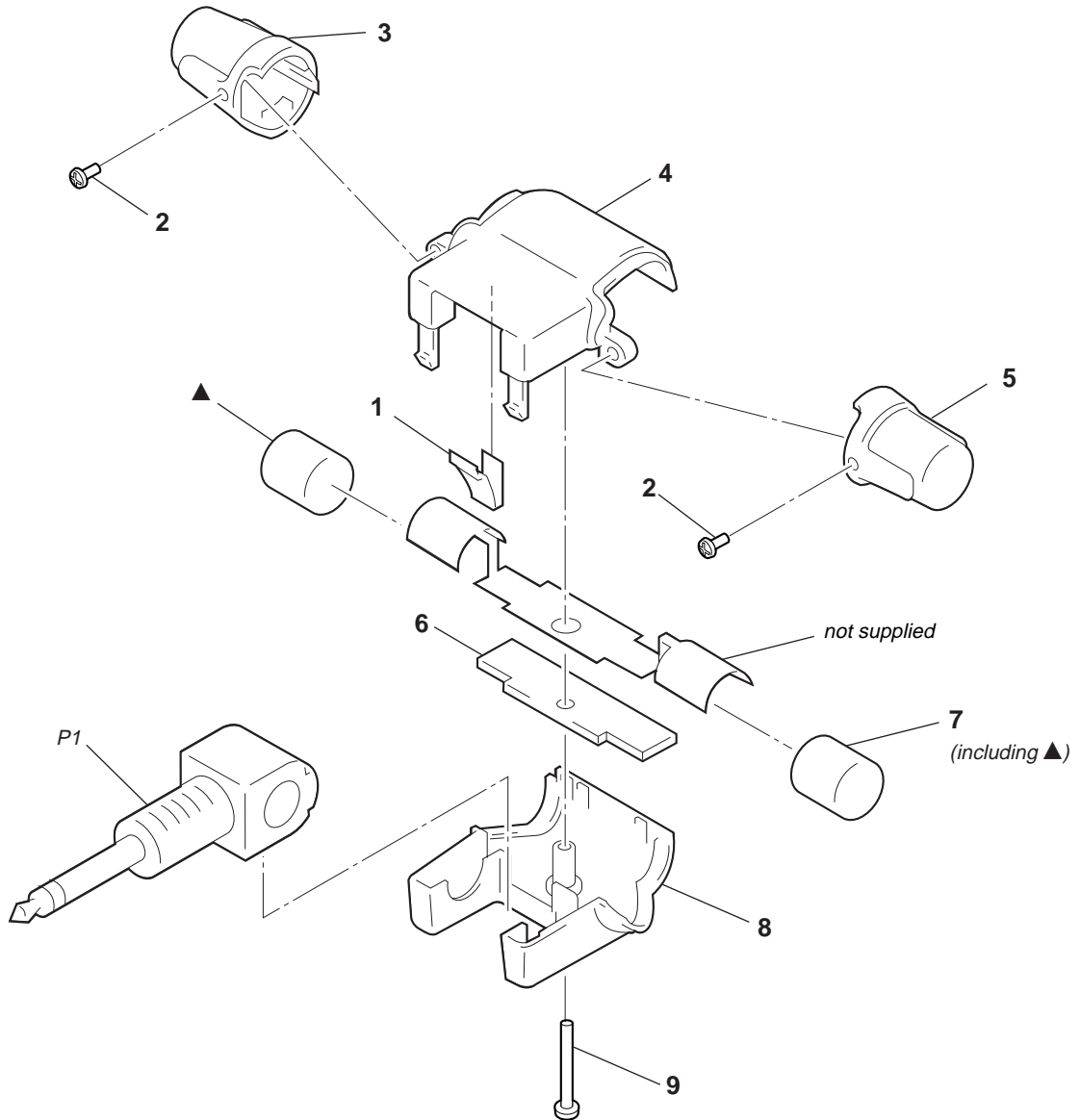
Note:

- All capacitors are in μF unless otherwise noted. pF: $\mu\mu\text{F}$
50 WV or less are not indicated except for electrolytics and tantalums.

SECTION 2 EXPLODED VIEW

NOTE :

- -XX, -X mean standardized parts, so they may have some difference from the original one.
- Items marked “ * ” are not stocked since they are seldom required for routine service. Some delay should be anticipated when ordering these items.
- The mechanical parts with no reference number in the exploded views are not supplied.



Ref. No.	Part No.	Description	Remark	Ref. No.	Part No.	Description	Remark
1	2-545-316-01	SPRING, CLICK		* 6	1-667-840-11	AMP BOARD	
2	2-387-701-21	SCREW (1.4)		7	A-4540-471-A	CAPSULE ASSY	
3	X-2542-154-1	GRILLE ASSY (R)		8	2-545-314-01	CASE, REAR	
4	2-545-313-01	CASE, FRONT		9	3-334-565-11	SCREW (B1.7 X 10), TAPPING	
5	X-2542-153-1	GRILLE ASSY (L)		P1	1-782-912-11	CORD (WITH PLUG) (3 CORE) (MIC OUTPUT)	

AMP

**SECTION 3
ELECTRICAL PARTS LIST**

NOTE :

- Due to standardization, replacements in the parts list may be different from the parts specified in the diagrams or the components used on the set.
- Items marked “ * ” are not stocked since they are seldom required for routine service. Some delay should be anticipated when ordering these items.

- CAPACITORS
uF : μ F

When indicating parts by reference number, please include the board.

Ref. No.	Part No.	Description	Remark
*	1-667-840-11	AMP BOARD ***** < CAPACITOR >	
C1	1-163-009-11	CERAMIC CHIP 0.001uF 10% 50V	
C2	1-163-009-11	CERAMIC CHIP 0.001uF 10% 50V	
		< DIODE >	
D1	8-719-976-96	DIODE DTZ4.7C	
D2	8-719-976-96	DIODE DTZ4.7C	

		MISCELLANEOUS *****	
P1	1-782-912-11	CORD (WITH PLUG) (3 CORE) (MIC OUTPUT)	

		ACCESSORIES & PACKING MATERIALS *****	
	3-860-993-11	MANUAL, INSTRUCTION (ENGLISH,FRENCH,GERMAN,SPANISH, DUTCH,SWEDISH,ITALIAN,PORTUGUESE)	

ECM-DS70P

SONY[®]

SERVICE MANUAL

2001.03

*US Model
Canadian Model
AEP Model
E Model*

SUPPLEMENT - 1

File this Supplement with the Service Manual.

Subject : ADDITION OF ACCESORIES (US MODEL ONLY)

- **Added follwing Accesories** (Service Manual See page 4)

<u>Ref. No.</u>	<u>Part No.</u>	<u>Description</u>	<u>Remark</u>
	1-757-949-11	CORD, MICROPHONE EXTENSION (US model only)	
	A-3052-666-A	CLIP ASSY, HOLDER (US model only)	

